

VQR 2011-2014

Risultati DipSUSS

Valutazione prodotti

VQR 2004-2010

- **3** prodotti per ricercatore
- Punteggi:
 - Eccellente: 1
 - Buono: 0.8
 - Accettabile: 0.5
 - Limitato: 0
 - Mancante: -0.5
 - Penalizzato: -1

VQR 2011-2014

- **2** prodotti per ricercatore
- Punteggi:
 - Fascia A: 1
 - Fascia B: 0.7
 - Fascia C: 0.4
 - Fascia D: 0.1
 - Fascia E: 0
 - Fascia F (non presentato): 0

Variazione prodotti attesi

VQR 2004-2010

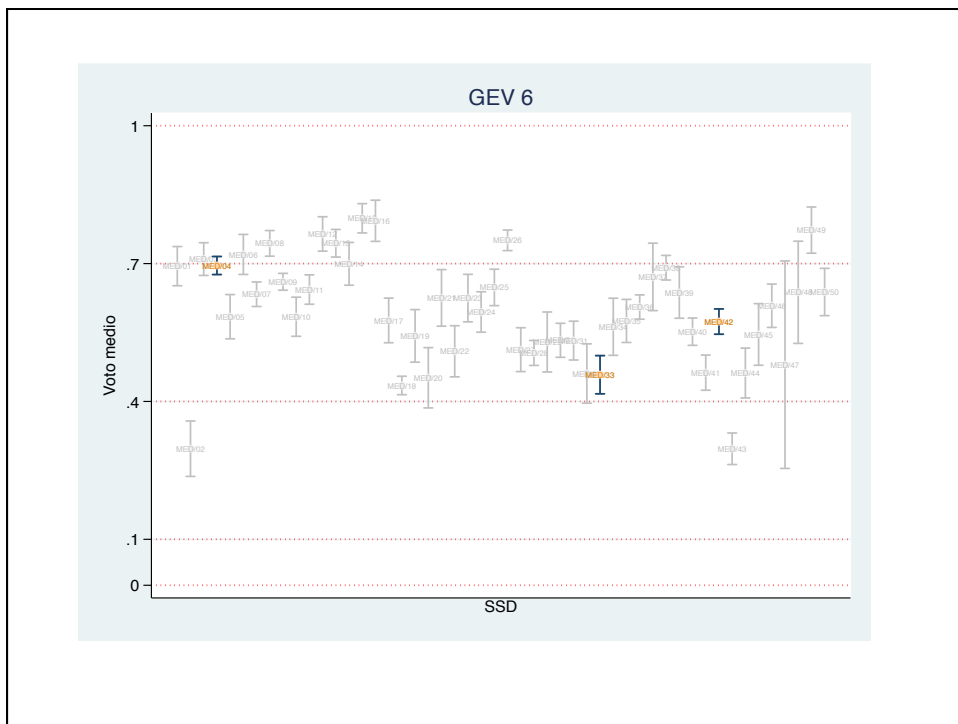
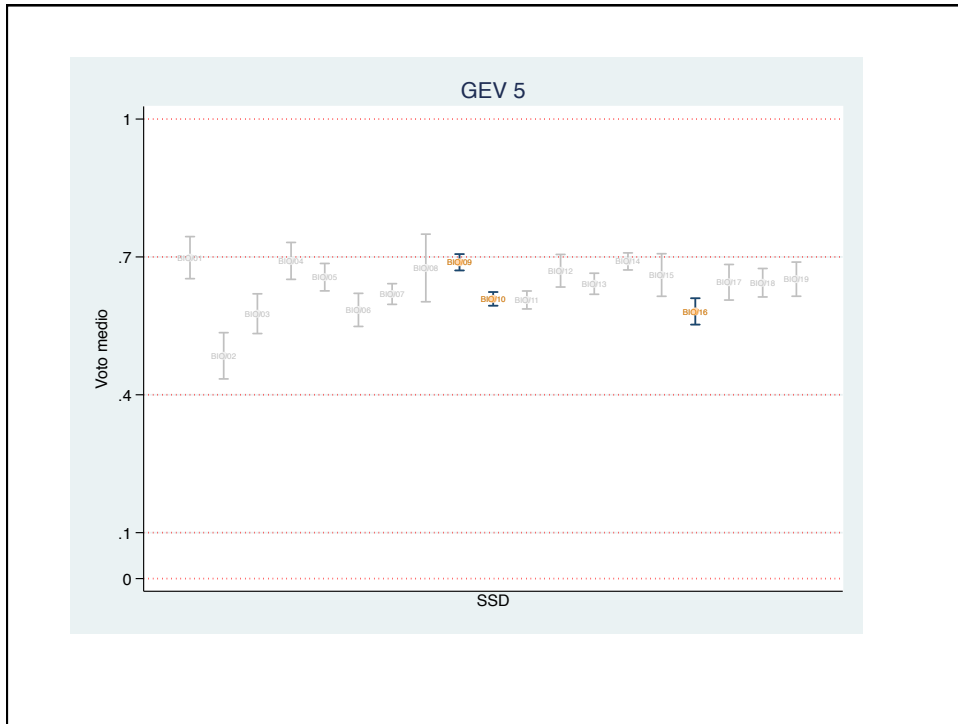
- Area:
 - 5: **13** (bibliometrica)
 - 6: **23** (bibliometrica)
 - 10: **48**
 - 11/a: **42** >> 1 p
 - 11/b: **22** (bibliometrica)
 - M-EDF/01 e M-EDF/02 compresi
 - 12: **3**
 - 13: **3**
 - 14: **14**

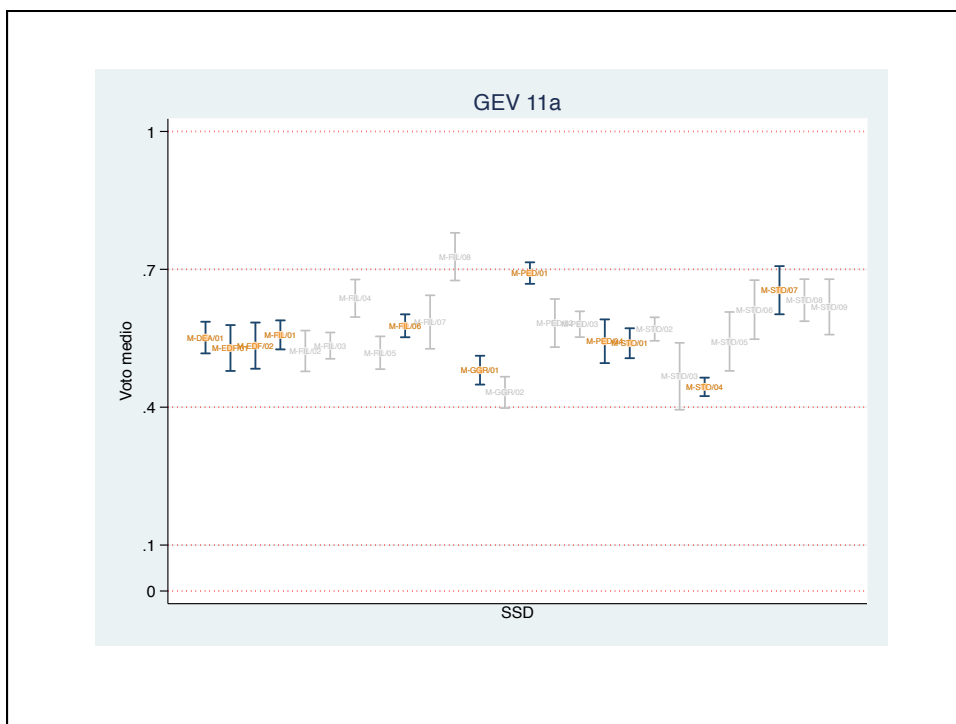
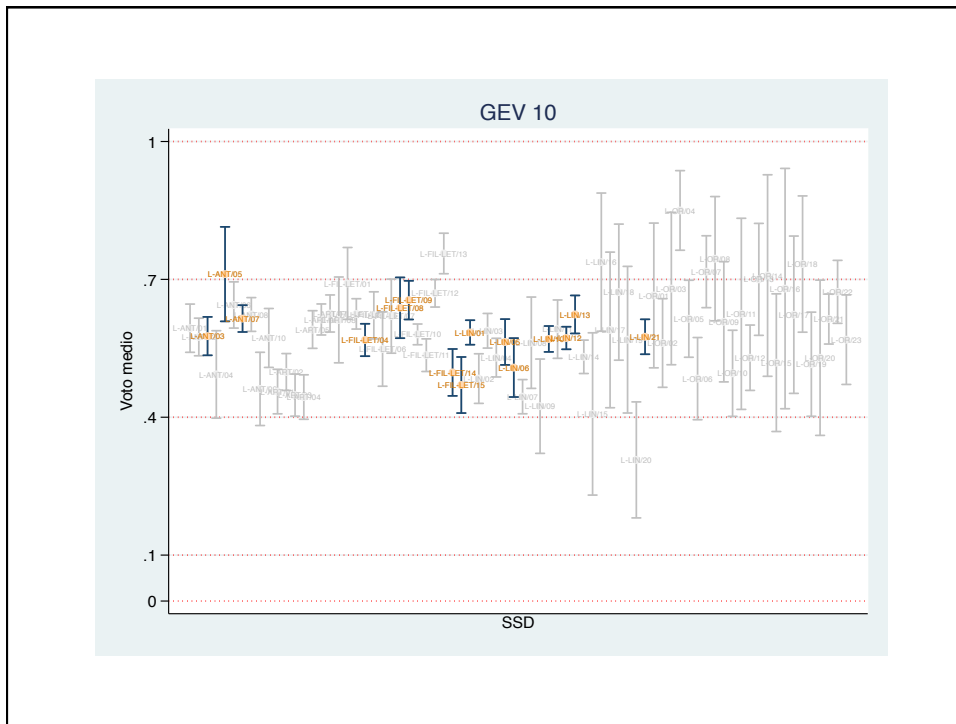
VQR 2011-2014

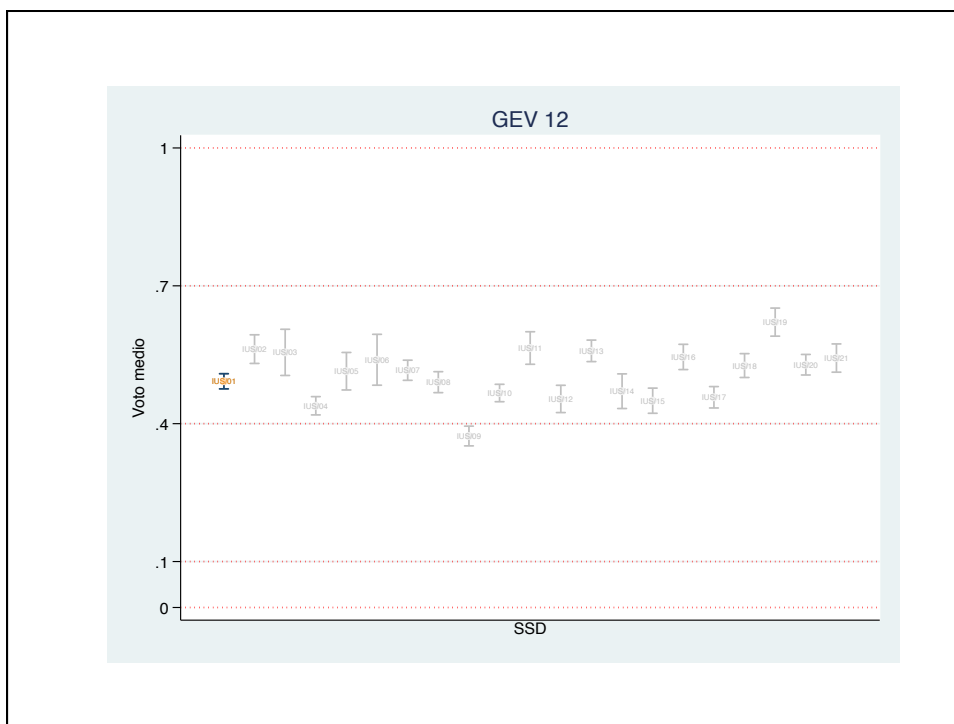
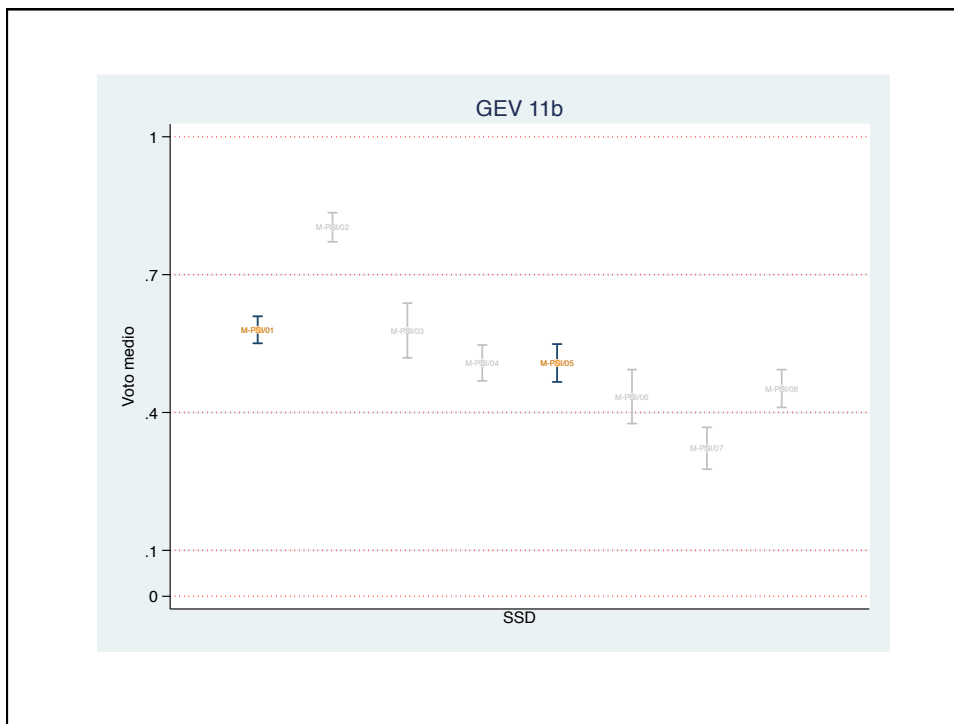
- Area:
 - 5: **9** (bibliometrica) >> 2 np
 - 6: **16** (bibliometrica)
 - 10: **38** >> 2 np
 - 11/a: **62**
 - M-EDF/01 e M-EDF/02 compresi
 - 11/b: **9** (bibliometrica)
 - 12: **2** >> 2 np
 - 13: **2**
 - 14: **12** >> 2 np

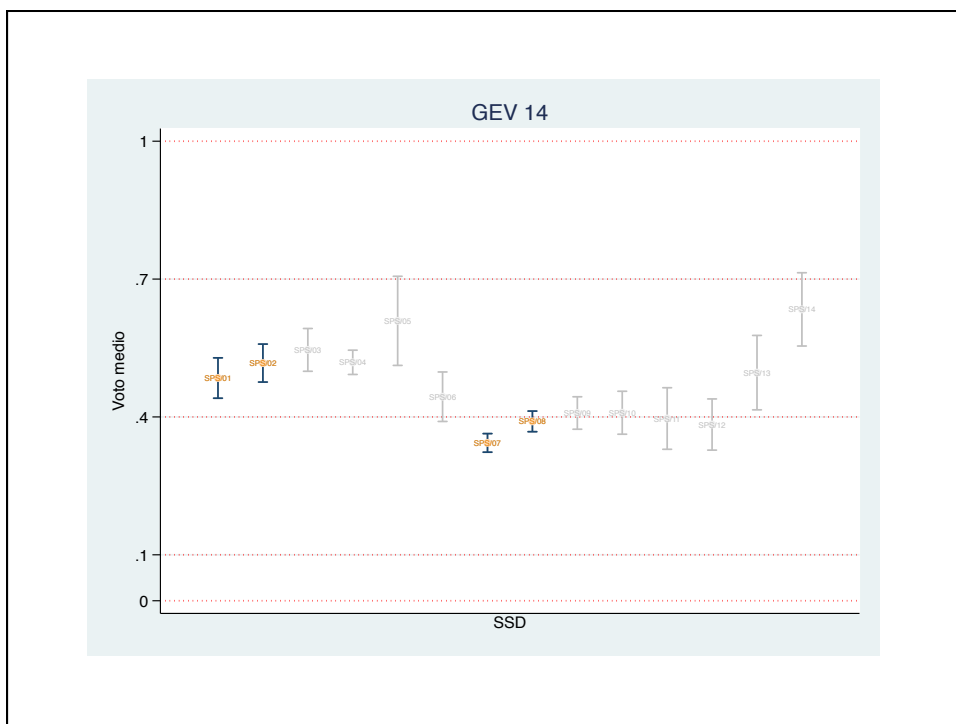
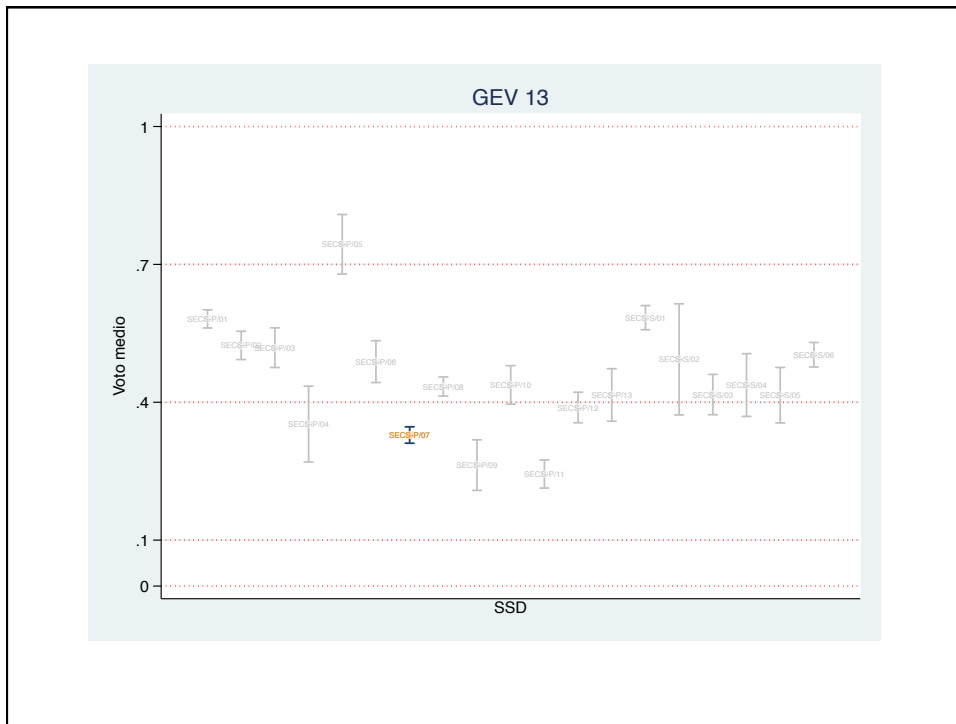
Effetto della variazione dei Punteggi e confronto VQR1 vs 2

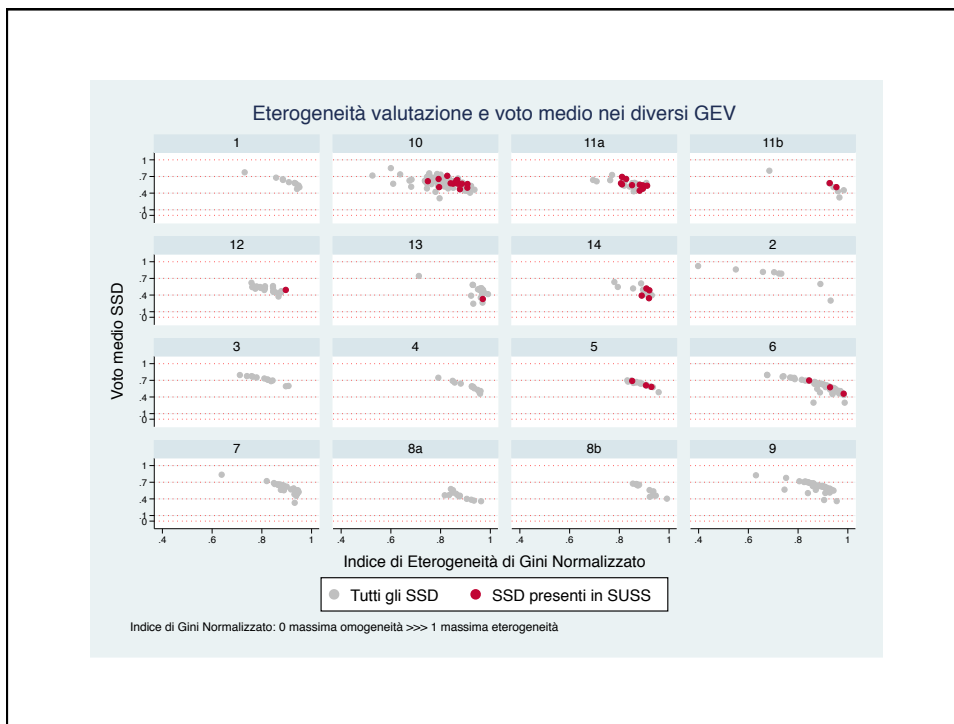
Score 2004-2010	1	0.8	0.5	0	-0.5	-1								
Score 2011-2014	1	0.7	0.4	0.1	0	0								
VQR	Score applicato	Area	Dipartimento	Prodotti attesi	Eccellente	Buono	Accettabile	Limitato	Mancante	Penalizzato	Punteggio	Voto medio	R ANVUR	R Standardizzato
2004-2011	2004	5	SUSS (Ateneo)	13	5	3	2	3	0	0	8.4	0.646154	1.06	1.1236
2004-2011	2011	5	SUSS (Ateneo)	13	5	3	2	3	0	0	8.2	0.630769		
2011-2014	2004	5	SUSS (Ateneo)	9	3	0	2	1	2	0	3	0.333333		
2011-2014	2011	5	SUSS (Ateneo)	9	3	0	2	1	2	0	3.9	0.433333	0.67	0.6954 (0.6718-0.7208)
2004-2011	2004	6	SUSS (Ateneo)	23	10	4	2	7	0	0	14.2	0.617391	1.33	1.3993
2004-2011	2011	6	SUSS (Ateneo)	23	10	4	2	7	0	0	14.3	0.621739		
2011-2014	2004	6	SUSS (Ateneo)	16	5	4	3	4	0	0	3.7	0.66925		
2011-2014	2011	6	SUSS (Ateneo)	16	5	4	3	3	1	0	9.3	0.58125	0.96	1.0116 (0.9641-1.0639)
2004-2011	2004	10	Ateneo	139	49	58	14	16	2	0	101.4	0.729496	0.99	
2004-2011	2011	10	Ateneo	139	49	58	14	16	2	0	96.8	0.696403		
2011-2014	2004	10	Ateneo	94	15	43	19	17	0	0	58.9	0.626596		
2011-2014	2011	10	Ateneo	94	15	43	19	9	8	0	53.6	0.570213	0.99	
2004-2011	2004	10	SUSS	48	23	16	3	6	0	0	37.3	0.777083	1.18	1.172
2004-2011	2011	10	SUSS	48	23	16	3	6	0	0	36	0.76		
2011-2014	2004	10	SUSS	38							22.5	0.592105	1.03	1.0270 (0.9528-1.1137)
2011-2014	2011	10	SUSS	38							22.5	0.592105	1.03	1.0270 (0.9528-1.1137)
2004-2011	2004	11a	Ateneo	86	11	33	10	29	3	0	40.9	0.475581	0.79	
2004-2011	2011	11a	Ateneo	86	11	33	10	29	3	0	41	0.476744		
2011-2014	2004	11a	Ateneo	62	7	23	14	18	0	0	22.1	0.232325		
2011-2014	2011	11a	Ateneo	62	7	23	14	13	5	0	30	0.483871	0.87	N.B. M-EDF/01 e M-EDF/02 valutati qui
2004-2011	2004	11a	SUSS	42	1	12	5	22	2	0	12.1	0.288095	0.5	0.5096
2004-2011	2011	11a	SUSS	42	1	12	5	22	2	0	13.2	0.31381		
2011-2014	2004	11a	SUSS	38							16.4	0.431579	0.78	0.7624 (0.7157-0.8157) N.B. M-EDF/01 e M-EDF/02 valutati qui
2011-2014	2011	11a	SUSS	38							16.4	0.431579	0.78	0.7624 (0.7157-0.8157) N.B. M-EDF/01 e M-EDF/02 valutati qui
2004-2011	2004	11b	SUSS (Ateneo)	22	3	0	5	14	0	0	5.5	0.25	0.46	0.4443 N.B. M-EDF/01 e M-EDF/02 valutati qui
2004-2011	2011	11b	SUSS (Ateneo)	22	3	0	5	14	0	0	6.4	0.290909		
2011-2014	2004	11b	SUSS (Ateneo)	9	2	0	3	3	1	0	3	0.333333		
2011-2014	2011	11b	SUSS (Ateneo)	9	2	0	3	1	3	0	3.3	0.366667	0.69	0.6596 (0.6231-0.7007)
2004-2011	2004	14	Ateneo	20	0	5	7	5	3	0	6	0.3	0.67	
2004-2011	2011	14	Ateneo	20	0	5	7	5	3	0	6.8	0.34		
2011-2014	2004	14	Ateneo	16	0	4	1	5	3	4	3.3	0.29325		
2011-2014	2011	14	Ateneo	16	0	4	1	5	6	0	3.7	0.23125	0.53	
2004-2011	2004	14	SUSS	14	0	3	6	5	0	0	5.4	0.385714	0.86	0.8639
2004-2011	2011	14	SUSS	14	0	3	6	5	0	0	5.4	0.385714		
2011-2014	2004	14	SUSS	12							2.3	0.191667	0.44	0.4747 (0.4439-0.5101)
2011-2014	2011	14	SUSS	12							2.3	0.191667	0.44	0.4747 (0.4439-0.5101)











Sub-GEV	GEV	SSD	Prodotti Attesi SUSS	Voto Medio (ANVUR)	Voto medio (riciccolo)	Minimo IC 95%	Massimo IC 95%	Somma Punteggi Effettivi	Punteggio atteso medio	Punteggio atteso Minimo IC	Punteggio atteso Massimo IC	R (ANVUR) Medio	R Standardizzato Minimo	R Standardizzato Massimo	Prodotti NON presentati	Variazione %	
	5	BIO/09	3	0.69	0.6883	0.6706	0.7061		2.0650	2.0118	2.1183				2		
	5	BIO/10	2	0.61	0.6087	0.5939	0.6236		1.2175	1.1878	1.2472						
	5	BIO/16	4	0.58	0.5814	0.5527	0.6101		2.3256	2.2110	2.4402						
	TOTALE	9	0.4333					3.9	5.6081	5.4105	5.8057	0.67	0.6954	0.6718	0.7208	2	3.79%
	6	MED/04	2	0.7	0.6958	0.6761	0.7155		1.3916	1.3522	1.4309						
	6	MED/13	2	0.46	0.4582	0.4166	0.4997		0.9164	0.8332	0.9995						
	6	MED/42	12	0.57	0.5738	0.5463	0.6013	7.4	6.3859	6.5556	7.2161	1.07	1.0747	1.0255	1.1388		
	TOTALE	16	0.5813					9.3	9.1938	8.7410	9.6465	0.96	1.0116	0.9641	1.0639	2	5.37%
Antichistica	10	L-ANT/03	2	0.58	0.5765	0.5347	0.6183		1.1531	1.0695	1.2366						
Antichistica	10	L-ANT/05	2	0.71	0.7114	0.6986	0.8142		1.4229	1.2172	1.6285						
Antichistica	10	L-ANT/07	2	0.61	0.6147	0.5855	0.6439		1.2294	1.1711	1.2877						
Antichistica	10	L-FIL-LET/04	4	0.57	0.5681	0.5329	0.6033		2.2724	2.1316	2.4133						
Antichistica	10	L-FIL-LET/08	2	0.64	0.6381	0.5721	0.7042		1.2763	1.1441	1.4085						
	TOTALE	12	0.78					9.3	7.3540	6.7334	7.9747	1.29	1.2646	1.1662	1.3812	2	-1.97%
Italianistica	10	L-LIN/01	4	0.58	0.5845	0.5578	0.6112		2.3379	2.2313	2.4446						
	TOTALE	4	0.85					3.4	2.3379	2.2313	2.4446	1.4543	1.3908	1.5238	2		
Lingue	10	L-FIL-LET/09	2	0.65	0.6548	0.6127	0.6969		1.3096	1.2255	1.3938						
Lingue	10	L-FIL-LET/14	4	0.5	0.4975	0.4465	0.5485		1.9900	1.7859	2.1941						
Lingue	10	L-FIL-LET/15	2	0.47	0.4701	0.4091	0.5111		0.9402	0.8182	1.0622						
Lingue	10	L-LIN/05	2	0.56	0.5637	0.5139	0.6135		1.1274	1.0278	1.2270						
Lingue	10	L-LIN/06	2	0.51	0.5081	0.4440	0.5721		1.0161	0.8880	1.1443						
Lingue	10	L-LIN/10	2	0.57	0.5703	0.5421	0.5985		1.1406	1.0843	1.1970						
Lingue	10	L-LIN/12	2	0.57	0.5724	0.5479	0.5969		1.1448	1.0957	1.1939						
Lingue	10	L-LIN/13	2	0.62	0.6237	0.5824	0.6650		1.2474	1.1647	1.3301						
Lingue	10	L-LIN/21	4	0.58	0.5751	0.5371	0.6131		2.3004	2.1484	2.4523						
	TOTALE	22	0.45					9.8	12.2165	11.2384	13.1946	0.80	0.8022	0.7427	0.8720	2	0.27%
	TOTALE	38	0.5921					22.5	21.9085	20.2031	23.6138	1.03	1.0270	0.9528	1.1137	2	-0.29%

Sub-GEV	GEV	SSD	Prodotti Attesi SUSS	Voto Medio (ANVUR)	Voto medio (ricalcolo)	Minimo IC 95%	Massimo IC 95%	Somma Punteggi Effettivi	Punteggio atteso medio	Punteggio atteso Minimo IC	Punteggio atteso Massimo IC	R (ANVUR)	R Standardizzato Medio	R Standardizzato Minimo	R Standardizzato Max	Prodotti NON presentati	Variazione %
Filosofia	11a	M-FIL/01	2	0.56	0.5573	0.5258	0.5889		1.1147	1.0515	1.1778						
	11a	M-FIL/06	4	0.57	0.5771	0.5521	0.6020		2.3084	2.2086	2.4082						
			6	0.60				3.6	3.4231	3.2601	3.5860	1.06	1.0517	1.0039	1.1043		-0.78%
Ped/MEDF	11a	M-EDF/01	4	0.53	0.5288	0.4789	0.5787		2.1151	1.9155	2.3146						
Ped/MEDF	11a	M-EDF/02	6	0.53	0.5340	0.4837	0.5842	4.1	3.2038	2.9023	3.5054	1.28	1.2797	1.1696	1.4127		
Ped/MEDF	11a	M-PED/01	6	0.69	0.6919	0.6886	0.7152	3	4.1514	4.0113	4.2914	0.72	0.7227	0.6991	0.7479		
Ped/MEDF	11a	M-PED/04	4	0.54	0.5435	0.4959	0.5910		2.1759	1.9836	2.3642						
			20	0.50				9.9	11.6442	10.8128	12.4756	0.81	0.8502	0.7936	0.9156		4.96%
Stor/Geog/Demo	11a	M-DEA/01	4	0.55	0.5515	0.5171	0.5860		2.2061	2.0683	2.3439						
Stor/Geog/Demo	11a	M-GEG/01	2	0.48	0.4806	0.4493	0.5120		0.9613	0.8985	1.0240						
Stor/Geog/Demo	11a	M-STO/01	2	0.54	0.5391	0.5066	0.5717		1.0783	1.0131	1.1434						
Stor/Geog/Demo	11a	M-STO/04	2	0.44	0.4442	0.4241	0.4643		0.8883	0.8481	0.9286						
Stor/Geog/Demo	11a	M-STO/07	2	0.65	0.6545	0.6021	0.7070		1.3091	1.2043	1.4139						
			12	0.24				3.9	6.4430	6.0323	6.8537	0.46	0.4501	0.4231	0.4807		-2.15%
			38	0.431579				16.4	21.5103	20.1053	22.9153	0.78	0.7624	0.7157	0.8157		-2.25%
11b	M-PSI/01	6	0.58	0.5799	0.5505	0.6093	0.9	3.4793	3.3032	3.6555	0.27	0.2587	0.2462	0.2725			
11b	M-PSI/04	3	0.51	0.5079	0.4689	0.5469	2.4	1.5237	1.4066	1.6408		1.5752	1.4627				
			9	0.366667				3.3	5.0030	4.7097	5.2963	0.69	0.6596	0.6231	0.7007		-4.41%
12	IUS/01	2	0.49	0.4923	0.4758	0.5088	0	0.9846	0.9516	1.0175			0.0000	0.0000	0.0000	2	
			2	0				0	0.9846	0.9516	1.0175						
13	SECS-P/07	2	0.33	0.3287	0.3108	0.3466		0.2	0.6574	0.6216	0.6931		0.9043	0.2886	0.3218		
			2	0.1				0.2	0.6574	0.6216	0.6931						
14	SPS/01	2	0.48	0.4847	0.4407	0.5286		0.9693	0.8815	1.0571							
14	SPS/02	2	0.52	0.5172	0.4759	0.5585		1.0344	0.9517	1.1170							
14	SPS/07	6	0.34	0.3435	0.3233	0.3637	1.7	2.0610	1.9399	2.1822	0.83	0.8248	0.7790	0.8763			
14	SPS/08	2	0.39	0.3903	0.3678	0.4128		0.7805	0.7357	0.8255						2	
			12	0.191667				2.3	4.8453	4.5087	5.1819	0.44	0.4747	0.4439	0.5101	2	7.88%
			TOTALE SUSS	126	0.459524			57.9	69.7108	65.2515	74.1701		0.8306	0.7806	0.8873	8	

Sub-GEV	GEV	SSD	Prodotti Attesi SUSS	Voto Medio (ANVUR)	Voto medio (ricalcolo)	Minimo IC 95%	Massimo IC 95%	Somma Punteggi Effettivi	Punteggio atteso medio	Punteggio atteso Minimo IC	Punteggio atteso Massimo IC	R (ANVUR)	R Standardizzato Medio	R Standardizzato Minimo	R Standardizzato Max	Prodotti NON presentati	Variazione %	
5	BIO/09	3	0.69	0.6883	0.6786	0.7061		2.0505	2.0118	2.1183					2			
5	BIO/10	2	0.61	0.6087	0.5909	0.6236		1.2175	1.1878	1.2472								
5	BIO/16	4	0.58	0.5814	0.5527	0.6101		2.3256	2.2110	2.4402								
			9	0.4333				3.9	5.6061	5.4105	5.8057	0.67	0.6954	0.6718	0.7208	2	3.79%	
6	MED/04	2	0.7	0.6958	0.6761	0.7155		1.3916	1.3522	1.4309								
6	MED/03	2	0.46	0.4582	0.4188	0.4997		0.9184	0.8332	0.9995								
6	MED/02	12	0.57	0.5735	0.5461	0.6011	7.4	4.8859	6.5566	7.2351	1.07	1.0747	1.0255	1.1288				
			16	0.5813				9.3	9.1938	8.7410	9.6465	0.96	1.0116	0.9641	1.0639		5.37%	
Antichista	10	L-ANT/01	2	0.58	0.5765	0.5347	0.6183		1.1531	1.0695	1.2366							
Antichista	10	L-ANT/05	2	0.71	0.7114	0.6086	0.8142		1.4229	1.2172	1.6285							
Antichista	10	L-ANT/07	2	0.61	0.6047	0.5855	0.6439		1.2704	1.2111	1.3287							
Antichista	10	L-FILLET/04	4	0.57	0.5681	0.5329	0.6033		2.2724	2.1316	2.4133							
Antichista	10	L-FILLET/08	2	0.64	0.6381	0.5721	0.7042		1.2783	1.1441	1.4085							
			12	0.78				9.3	7.9540	6.7934	7.9747	1.29	1.2646	1.1662	1.3812		-1.97%	
Italiistica	10	L-LIN/01	4	0.58	0.5845	0.5578	0.6112		2.3379	2.2313	2.4446			1.4543	1.3908	1.5238		
			4	0.85				3.4	2.3379	2.2313	2.4446							
Lingue	10	L-FILLET/09	2	0.65	0.6548	0.6127	0.6969		1.3096	1.2255	1.3938							
Lingue	10	L-FILLET/14	4	0.5	0.4975	0.4465	0.5485		1.9900	1.7859	2.1941					2		
Lingue	10	L-LIN/05	2	0.47	0.4701	0.4091	0.5313		0.9400	0.8182	0.9623							
Lingue	10	L-LIN/05	2	0.56	0.5637	0.5139	0.6135		1.1274	1.0278	1.2270							
Lingue	10	L-LIN/06	2	0.51	0.5081	0.4440	0.5721		1.0381	0.8889	1.1443							
Lingue	10	L-LIN/10	2	0.57	0.5703	0.5411	0.5983		1.1466	1.0943	1.1970							
Lingue	10	L-LIN/12	2	0.57	0.5724	0.5479	0.5989		1.1448	1.0957	1.1939							
Lingue	10	L-LIN/19	2	0.62	0.6247	0.5834	0.6650		1.2474	1.1647	1.3201							
Lingue	10	L-LIN/21	4	0.58	0.5751	0.5371	0.6331		2.3004	2.1484	2.4533							
			22	0.45				9.6	12.2165	11.3384	13.1946	0.80	0.8002	0.7427	0.8720	2	0.27%	
			38	0.9291				21.5	21.9088	20.9031	23.6138	1.63	1.6270	1.6528	1.1137	2	-0.20%	
Filosofia	11a	M-FIL/01	2	0.56	0.5573	0.5258	0.5889		1.1147	1.0515	1.1778							
Filosofia	11a	M-FIL/06	4	0.57	0.5771	0.5521	0.6020		2.3084	2.2086	2.4082							
			6	0.60				3.6	3.4231	3.2601	3.5860	1.06	1.0517	1.0039	1.1043		-0.78%	
Ped/MEDF	11a	M-EDF/01	4	0.53	0.5288	0.4789	0.5787		2.1151	1.9155	2.3146							
Ped/MEDF	11a	M-EDF/02	6	0.53	0.5340	0.4837	0.5842	4.1	3.2038	2.9023	3.5054	1.28	1.2797	1.1696	1.4127			
Ped/MEDF	11a	M-PED/01	6	0.69	0.6919	0.6886	0.7152	3	4.1514	4.0113	4.2914	0.72	0.7227	0.6991	0.7479			
Ped/MEDF	11a	M-PED/04	4	0.54	0.5435	0.4959	0.5910		2.1759	1.9836	2.3642							
			20	0.50				9.9	11.6442	10.8128	12.4756	0.81	0.8502	0.7936	0.9156		4.96%	
Stor/Geog/Demo	11a	M-DEA/01	4	0.55	0.5515	0.5171	0.5860		2.2061	2.0683	2.3439							
Stor/Geog/Demo	11a	M-GEG/01	2	0.48	0.4806	0.4493	0.5120		0.9613	0.8985	1.0240							
Stor/Geog/Demo	11a	M-STO/01	2	0.54	0.5391	0.5066	0.5717		1.0783	1.0131	1.1434							
Stor/Geog/Demo	11a	M-STO/04	2	0.44	0.4442	0.4241	0.4643		0.8883	0.8481	0.9286							
Stor/Geog/Demo	11a	M-STO/07	2	0.65	0.6545	0.6021	0.7070		1.3091	1.2043	1.4139							
			12	0.24				3.9	6.4430	6.0323	6.8537	0.46	0.4501	0.4231	0.4807		-2.15%	
			38	0.431579				16.4	21.5103	20.1053	22.9153	0.78	0.7624	0.7157	0.8157		-2.25%	
11b	M-PSI/01	6	0.58	0.5799	0.5505	0.6093	0.9	3.4793	3.3032	3.6555	0.27	0.2587	0.2462	0.2725				
11b	M-PSI/04	3	0.51	0.5079	0.4689	0.5469	2.4	1.5237	1.4066	1.6408		1.5752	1.4627					
			9	0.366667				3.3	5.0030	4.7097	5.2963	0.69	0.6596	0.6231	0.7007		-4.41%	
12	IUS/01	2	0.49	0.4923	0.4758	0.5088	0	0.9846	0.9516	1.0175			0.0000	0.0000	0.0000	2		
			2	0				0	0.9846	0.9516	1.0175							
13	SECS-P/07	2	0.33	0.3287	0.3108	0.3466		0.2	0.6574	0.6216	0.6931		0.9043	0.2886	0.3218			
			2	0.1				0.2	0.6574	0.6216	0.6931							
14	SPS/01	2	0.48	0.4847	0.4407	0.5286												